



Scan to learn more


# cove terra



## PRODUCT SHEET

### CONCRETE LOOK

THICKNESS  $\pm$  9 mm

FINISH MATTE

 V2 SLIGHT VARIATION

  Compliant with standards ANSI A137.1-2022

*Celebrating the world's most ancient building materials, raw earth and clay, Cove Terra represents a range of colors and possibilities for beautiful design in harmony with nature. The pleasantly smooth texture and vibrant pigment allow for seamless application across contemporary settings. The result is a tranquil balance between the ancient and modern world, as well as the natural and built environment. Cove Terra is offered in nine colors, standard and large sizes, with two mosaics and coordinating trim pieces.*

### SIZES



23<sup>5/8</sup>" x 47<sup>1/4</sup>"  
60x120 cm



11<sup>3/4</sup>" x 23<sup>5/8</sup>"  
30x60 cm



2<sup>3/4</sup>" x 11<sup>3/4</sup>"  
7x30 cm

### COLORS



WHITE



SAND



ASH



PEARL



GRAY



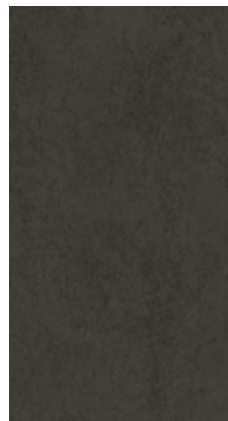
SMOKE



DENIM



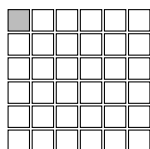
JADE



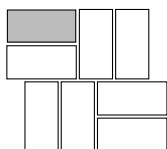
BLACK

COLORED BODY PORCELAIN TILE

### MOSAICS & DECORS



MOSAIC 2"x2"  
11<sup>3/4</sup>" x 11<sup>3/4</sup>" - 30x30 cm

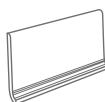


EVO MOSAIC  
11<sup>3/4</sup>" x 11<sup>3/4</sup>" - 30x30 cm

### COORDINATING TRIMS



**Bullnose**  
3"x 24" - 7.2x60 cm



**Cove base**  
6"x 12" - 15x30 cm -  $\pm$  8.5mm

Be sure to bring this to your local tile dealer or distributor as you discuss your design.